

F Series

10 WATTS SINGLE & DUAL OUTPUT DC/DC INDUSTRIAL

Features

- Metal case and shielded transformer result in very low EMI/RFI
- Low ripple
- Compact package
- PCB mountable
- Input/output isolation
- Input/output filtering
- Proven reliability
- Cost effective HV power



Specifications

INPUT

Voltage	See table.
Current	See table.
Typical turn-on voltage	0.7V.

OUTPUT

Power	10W.
Voltage	See table.
Current	See table.
Ripple	See table.
Regulation	10% (no load to full load).
Isolation	3,500V + Vout, F80-F121: 500V +Vout.
Efficiency	>70% typical.

ENVIRONMENTAL

Operating temperature	-10°C to +50°C.
Max case temperature	+85°C (measured at point indicated). F80-F121: +70°C (measured at point indicated)

GENERAL

Dimensions	F01-F60: 71 x 43 x 21 mm. F80-F121: 71 x 43 x 24 mm.
Weight	142g.
Packaging	Epoxy encapsulated.

OPTIONS

Mounting holes, add H to model number.

STANDARDS

C-Tick	AS/NZS CISPR11 Group 1 Class A
--------	--------------------------------

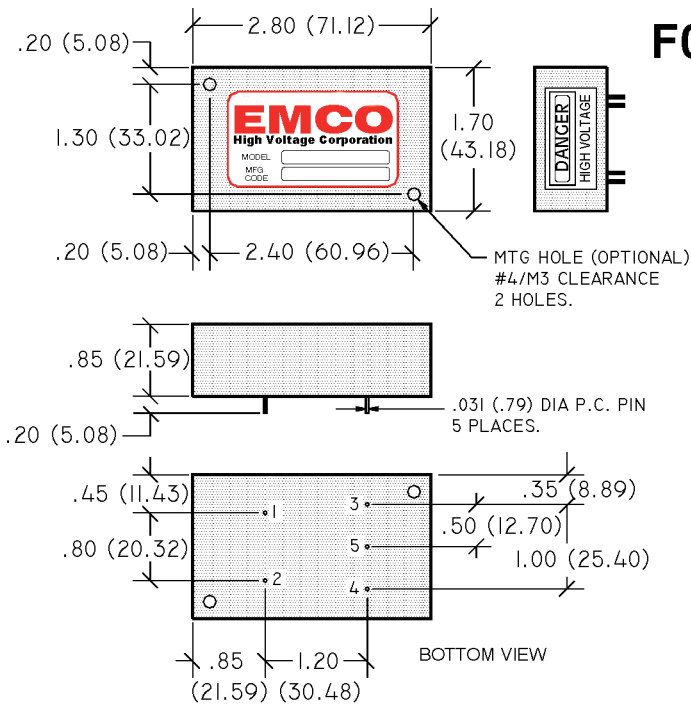
Selection Table

MODEL NUMBER	INPUT VOLTAGE	INPUT CURRENT		OUTPUT VOLTAGE	OUTPUT* CURRENT	RIPPLE
		NO LOAD	FULL LOAD			
F01	0 to 12V	<500mA	<1.75A	0 to ±100V	100mA	<1.0%
F02	0 to 12V	<500mA	<1.5A	0 to ±200V	50mA	<1.0%
F03	0 to 12V	<500mA	<1.5A	0 to ±300V	33.3mA	<1.0%
F04	0 to 12V	<500mA	<1.5A	0 to ±400V	25mA	<1.0%
F05	0 to 12V	<500mA	<1.5A	0 to ±500V	20mA	<0.1%
F06	0 to 12V	<500mA	<1.5A	0 to ±600V	16mA	<0.1%
F08	0 to 12V	<500mA	<1.5A	0 to ±800V	12.5mA	<0.1%
F10	0 to 12V	<500mA	<1.5A	0 to ±1000V	10mA	<0.1%
F15	0 to 12V	<500mA	<1.5A	0 to ±1500V	6.6mA	<0.1%
F20	0 to 12V	<500mA	<1.5A	0 to ±2000V	5mA	<1.0%
F30	0 to 15V	<500mA	<1.5A	0 to ±3000V	3.3mA	<1.0%
F40	0 to 15V	<500mA	<1.5A	0 to ±4000V	2.5mA	<1.0%
F50	0 to 15V	<500mA	<1.5A	0 to ±5000V	2mA	<1.0%
F60	0 to 15V	<500mA	<1.5A	0 to ±6000V	1.66mA	<1.0%
F80	0 to 15V	<500mA	<1.5A	0 to ±8000V	1.25mA	<2.5%
F101	0 to 15V	<500mA	<1.5A	0 to ±10000V	1mA	<2.5%
F121	0 to 15V	<500mA	<1.5A	0 to ±12000V	.834mA	<2.5%

* At max rated output voltage

F Series

15 - 10 WATTS SINGLE & DUAL OUTPUT DC/DC INDUSTRIAL

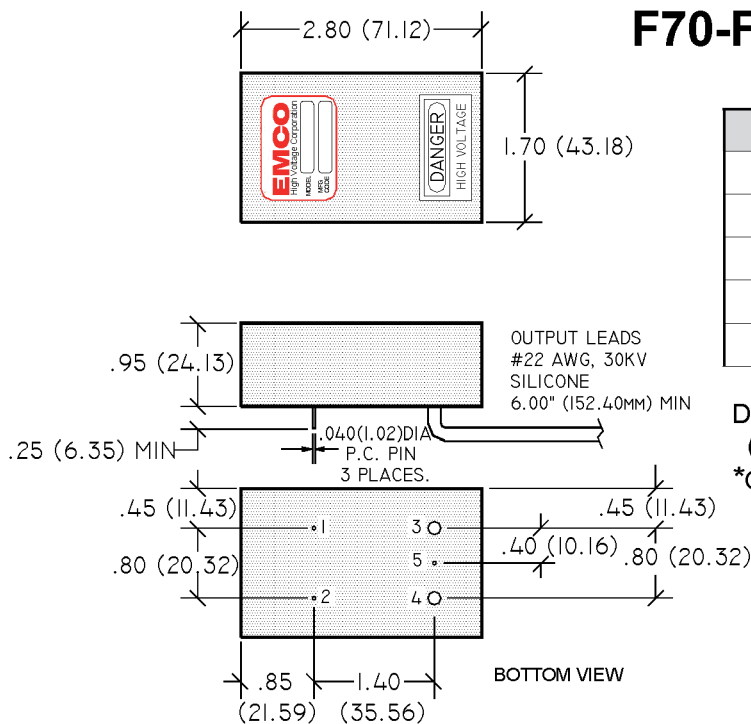


F01-F60

PIN #	FUNCTION
1	(+) Input
2	(-) Input
3	(+) Output
4	(-) Output
5	Center tap (optional)

Dimensions are in Inches
Dimensional Tolerances: ± 0.03 ($\pm .76$)
(Metric equivalents in parenthesis)

Note: Case is internally connected to (-) input.



F70-F121

PIN #	FUNCTION
1	(+) Input
2	(-) Input
3*	(+) Output
4*	(-) Output
5	Center tap (optional)

Dimensions are in Inches
Dimensional Tolerances: ± 0.03 ($\pm .76$)
(Metric equivalents in parenthesis)
*Output Leads

Note: Case is internally connected to (-) input.